

New Drawer 30

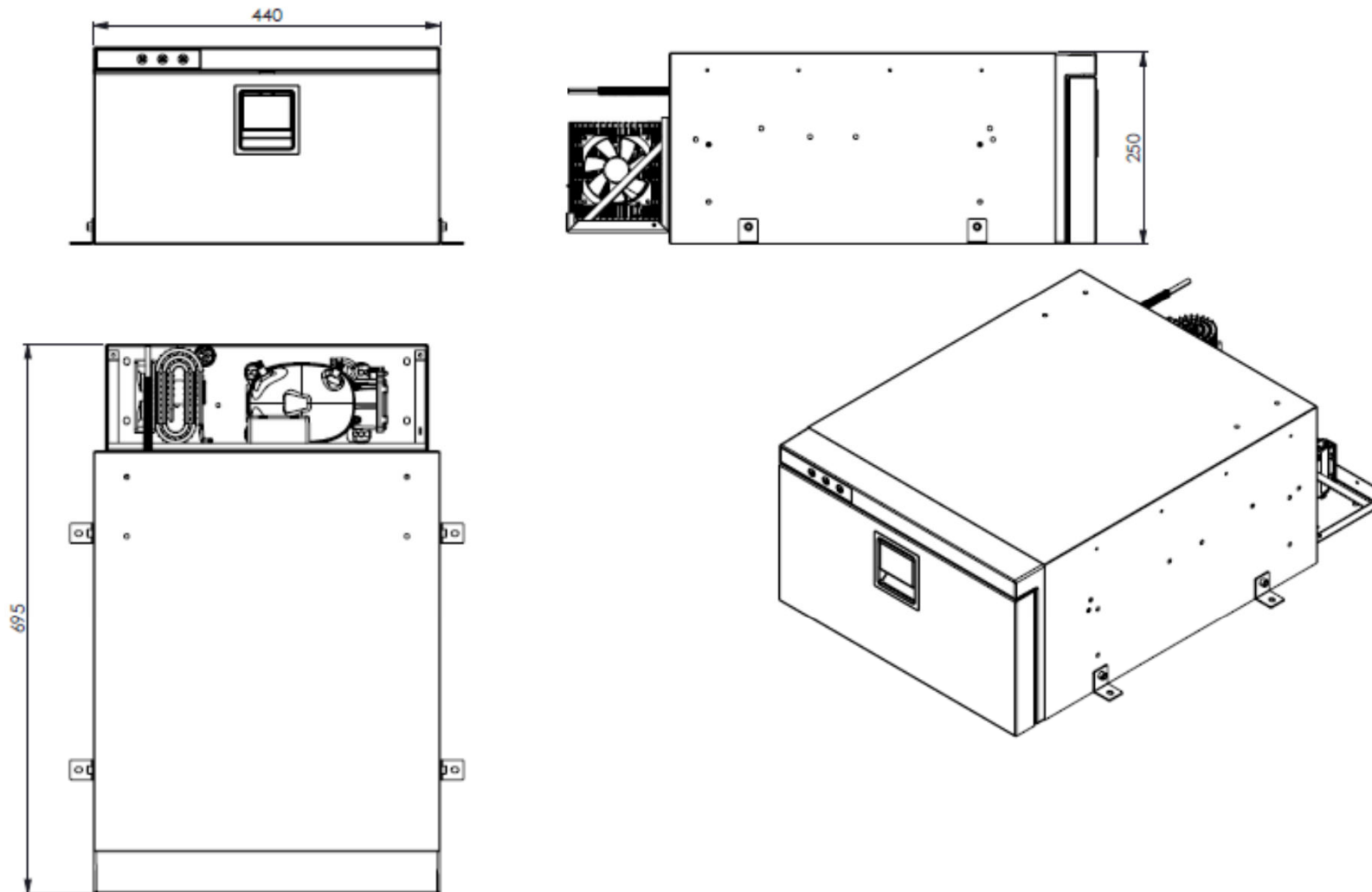
PRODUCT INFORMATION No. 2018-02

update October 2018

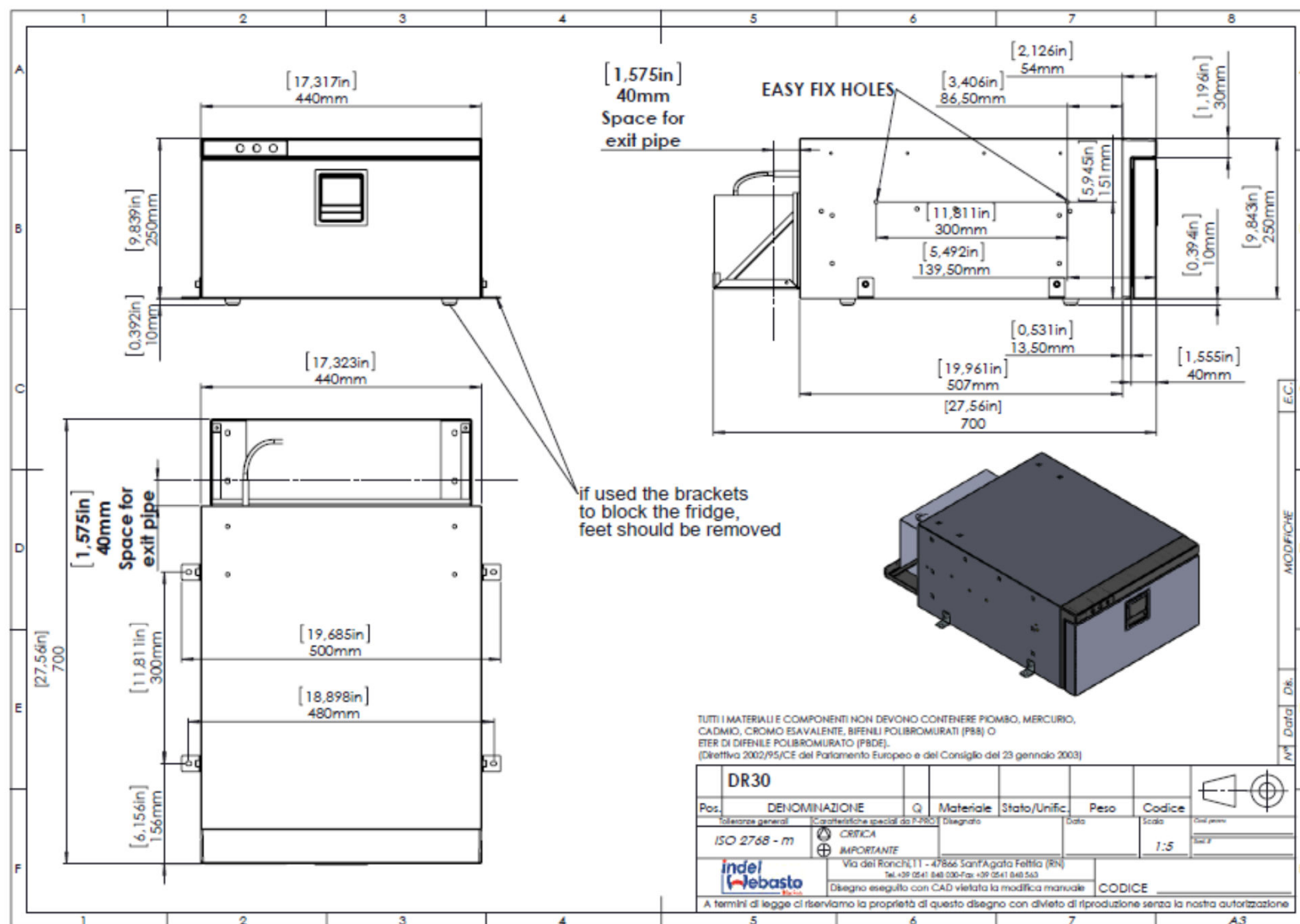
Marc Van Aperen

Indel Webasto Marine
Sales & Marketing

- ✓ Indel Webasto Marine, first company to introduce the drawer refrigerator concept on the market, has the pleasure to present a new product characterized by exclusive premium features, called Drawer 30
- ✓ The door design will have the same features of the Cruise Elegance line in order to grant the total consistency within the range.
- ✓ Three different products, part of the same family will be available:
 - Drawer 30 lt. Silver version
 - Drawer 30 lt. Black version
 - Drawer 30lt. White version
- ✓ It will work as a fridge, climatic class T

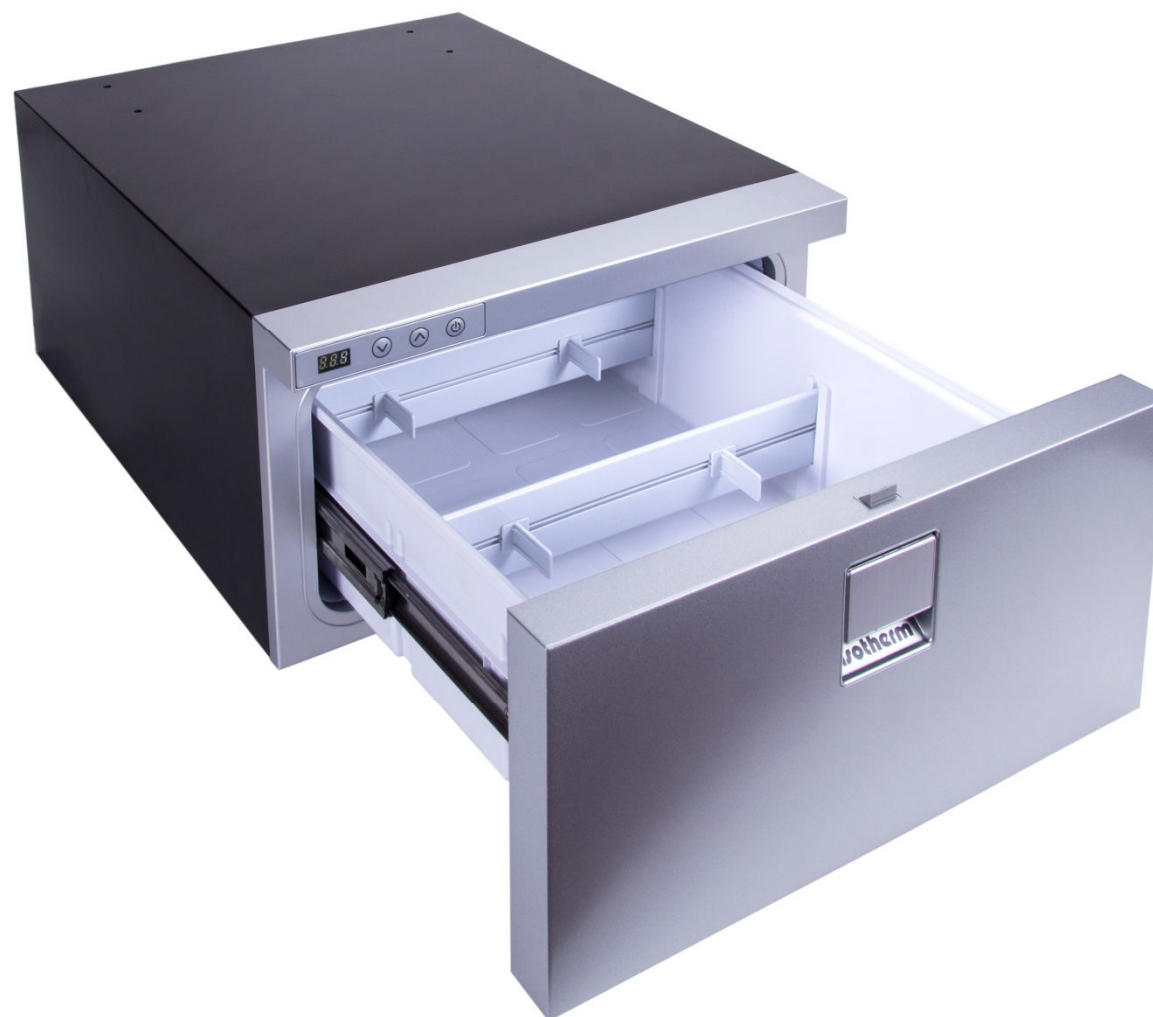


Three-Dimension View of Drawer 30





Drawer 30 SILVER



Drawer 30 SILVER



Drawer 30 BLACK



Drawer 30 BLACK



Drawer 30 WHITE



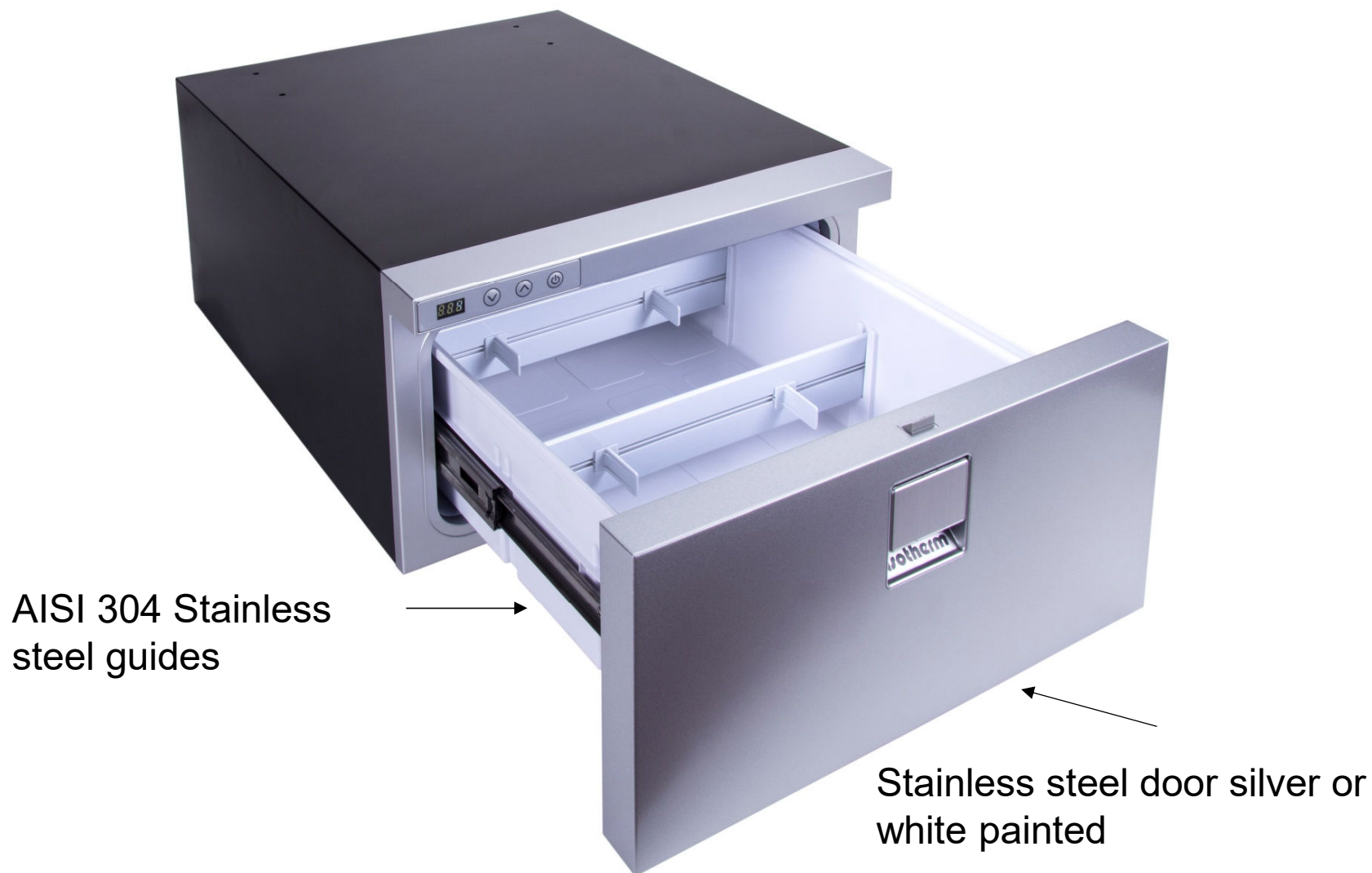
Drawer 30 WHITE

Three fridge models will be available, identical per outer dimensions and compressor' specification.

- Black version: basic version for internal fridge applications
 - Black steel door
 - Steel guides
- Silver & White versions: premium versions for marine grade applications
 - Stainless steel door silver or white painted
 - AISI 304 Stainless steel guides







Features and Benefits

- All versions are equipped with SECOP BD 1.4F-FSD 12/24V fixed speed compressor, the smallest and lightest DC unit on the market. Specially designed for **maximum efficiency** and **reliability** and minimize installation space
- Compressor mounted on a specific new «L» bracket on the back of the fridge for both models
- For qualified personnel, it is feasible to mount it in 3 other positions: right, left, top handling the compressor group and especially the piping very carefully to avoid damages. We recommend that this shall be done only by shipyards or bodybuilders and only after being taught thoroughly by our team



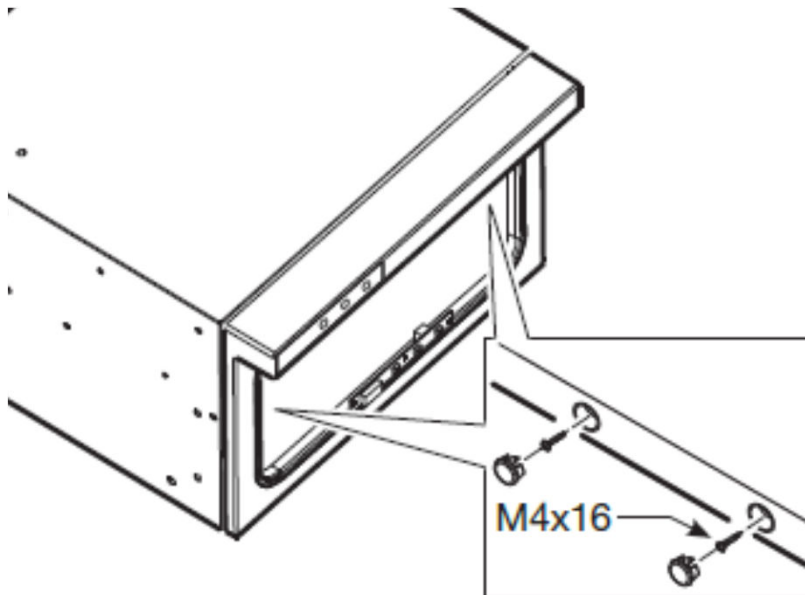
Features and Benefits: Digital Display

- Three digits digital display characterized by the high brightness that makes possible the selection of temperature by the final customer
- Splash-proof IPX5 front protection with built in installations
- Temperature range: +5° C to + 10°C



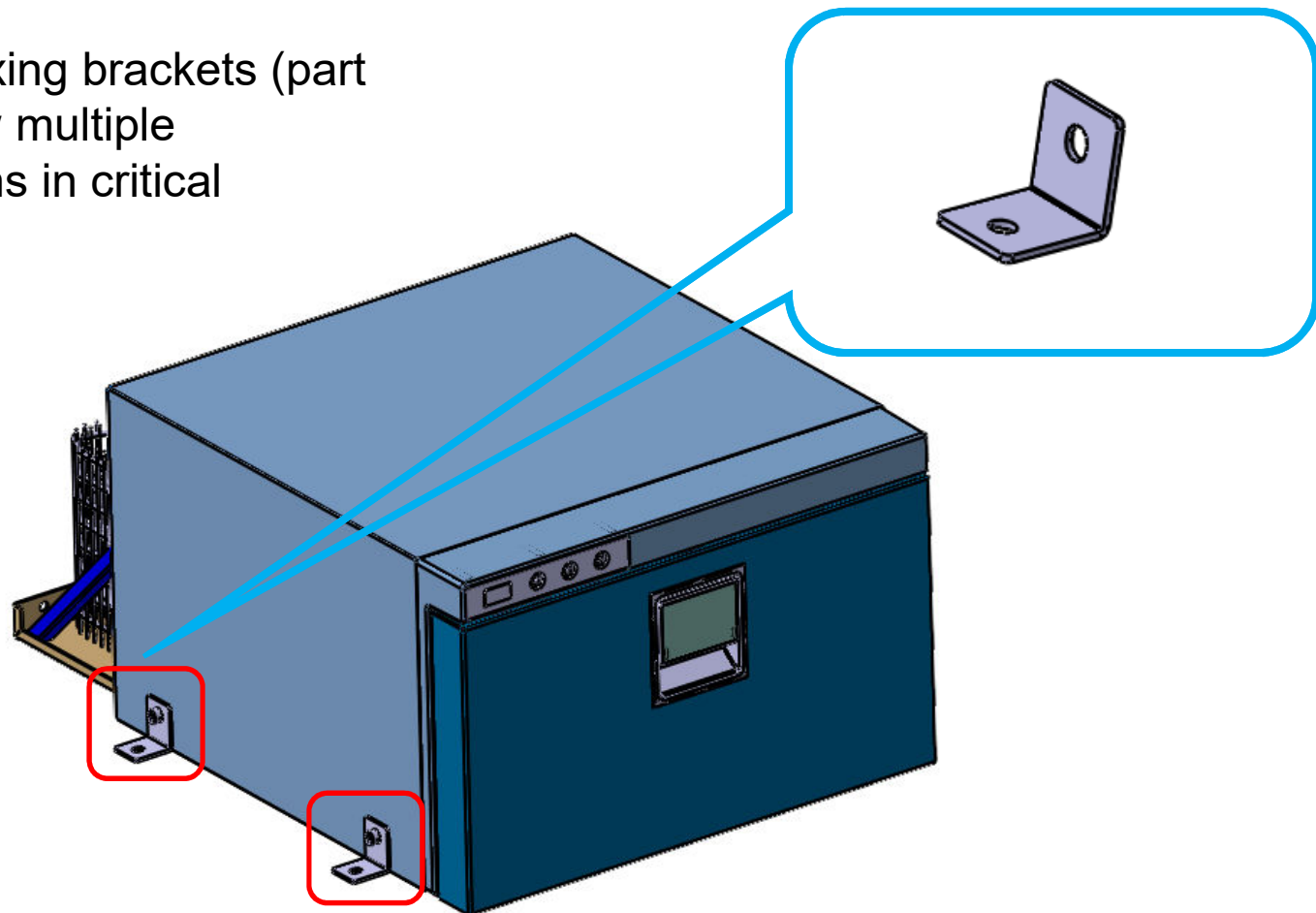
Features and Benefits

- Easy fix system to easier the device installation even without a mounting frame: fridge installation from the interior
- The external flange becomes a design accessory, not needed for installation
- Proper bushing structure prevents insulation's crushing



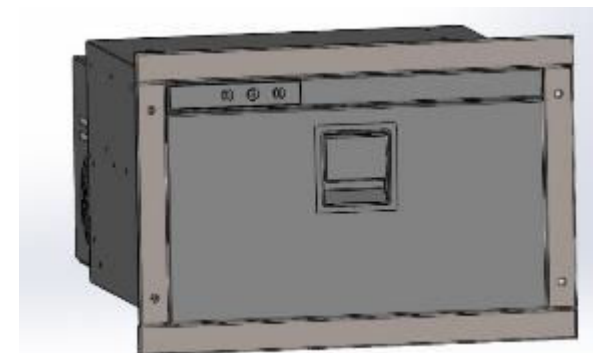
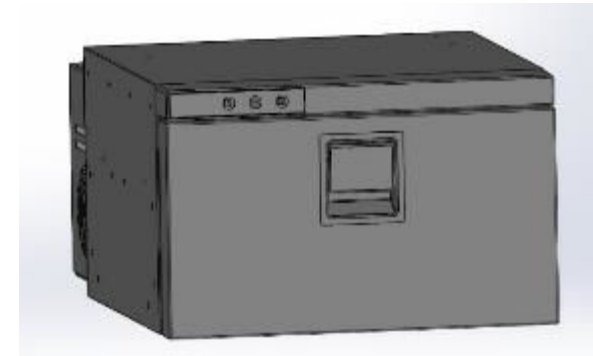
Features and Benefits

- Alternatively, 4 fixing brackets (part of BOM), to allow multiple installation options in critical applications



Features and Benefits

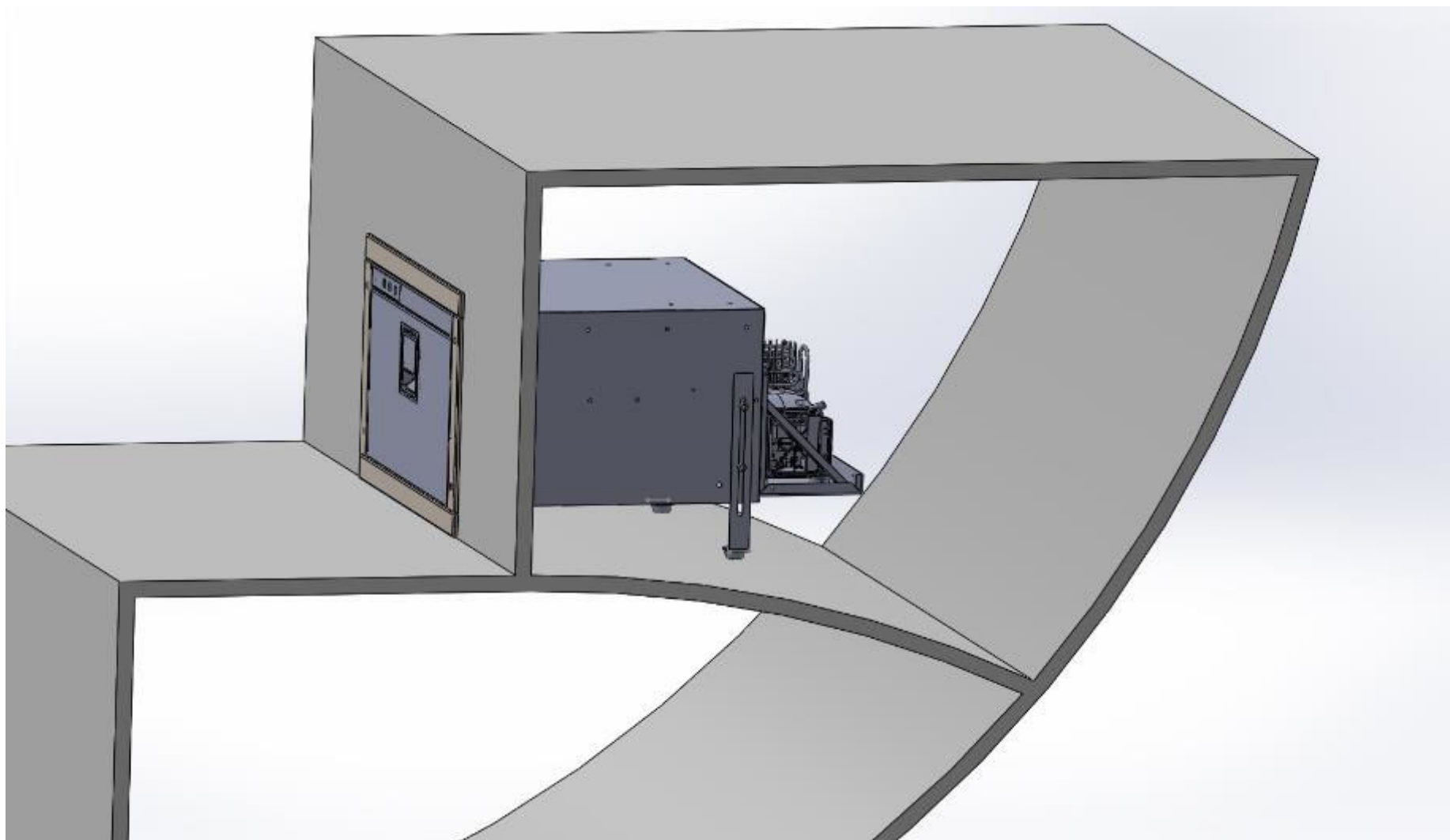
- Drawer 30 Black: black steel door, sliding guides in steel. Delivered as standard without fixing frame (easy-fix look)
- Drawer 30 Silver & White: door in stainless steel AISI 304 silver or white painted, sliding guides in stainless steel AISI 304. Delivered as standard without fixing frame (easy-fix look)
- 4 side mounting frame as optional, in three versions:
 - Black steel painted
 - Aisi 304 Inox Silver painted
 - Aisi 304 Inox White painted



Model	DRAWER 30
Effective Volume (L)	28,3 net / 32,7 gross
Product Dimensions	H260*W440*D700mm H without feet 250
	Depth with remote compressor 600 mm
Net Weight (kg)	18
Effective Stroke	400mm
Climatic Class	T
Compressor Parts	BD1.4F-FSD /101N2500
Rated Voltage/Frequency	DC 12V/24V
Rated Power Input	45W
Power Consumption(kW·h/24h) at 25° C	0.270KWh/24h
Temp. Control	Digital display
Refrigerating Fluid	R134a (45g)
Cooling Mode	Single Cycle Direct Cooling
Evaporator	Plate Evaporator
Condenser	Wire Condenser
Refrigeration Performance in climatic class T	+5°C~+10° C

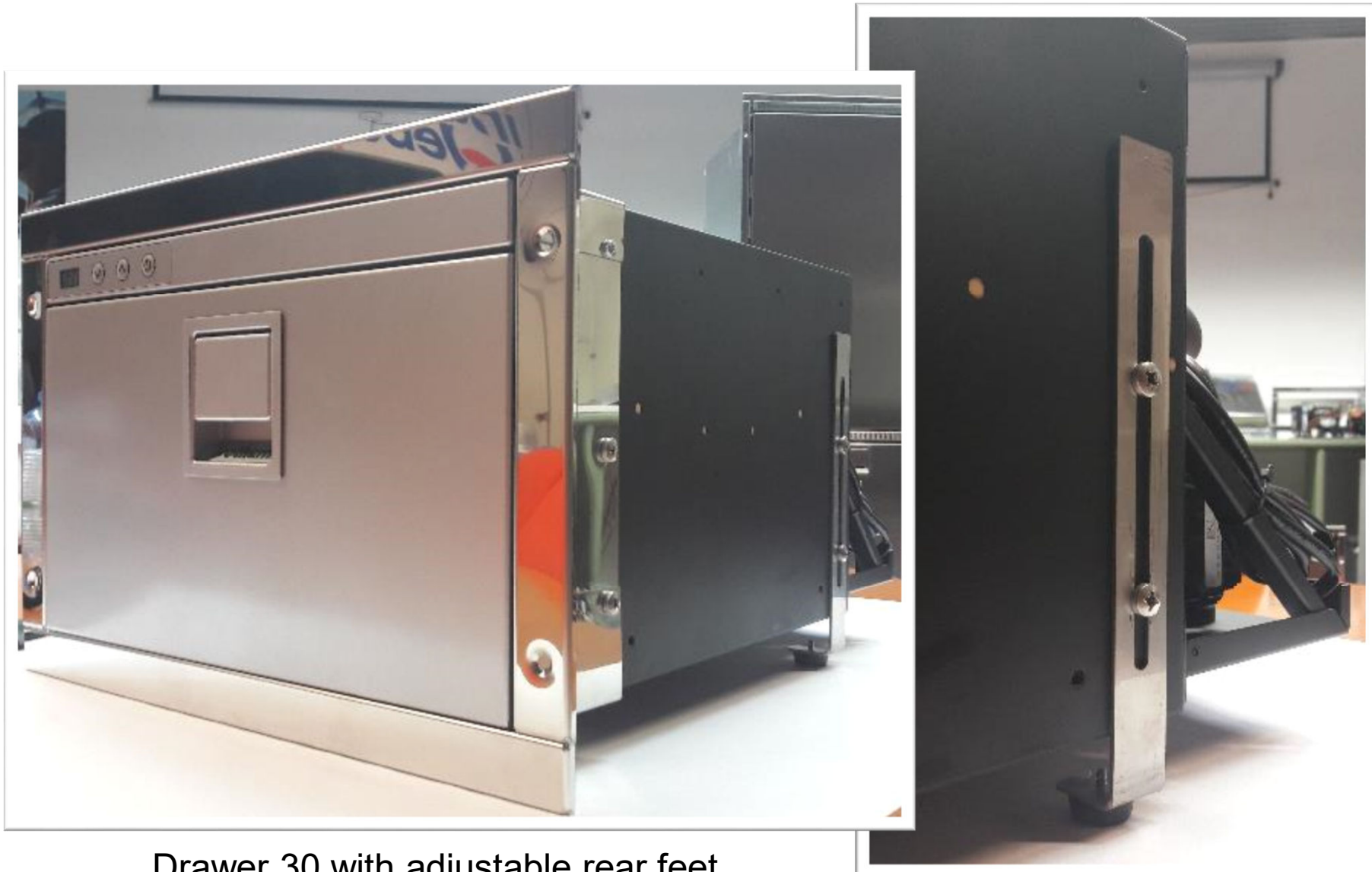
External temp. Conditions	Temp. Set	Min. reachable temperature	med. Temperature	operating compressor
16°C	10	8,20	10,43	3,89%
16°C	5	1,80	4,00	10,63%
16°C	-6	-7,20	-5,26	26,42%
16°C	-12	-12,80	-10,89	46,18%
16°C	-18	-18,90	-17,13	85,72
25°C	6	1,60	3,58	21,83%
25°C	8	3,70	6,04	17,59%
25°C	-12	-11,50	-10,30	100%
25°C	-6	-8,40	-6,47	63,13%
32°C	5	3,50	5,24	32,88%
32°C	-6	-6,70	-5,55	100%
38°C	5	2,90	4,74	51,21%
43°C	5	3,40	4,90	79,36%

- ✓ In typical applications on small boats, the product is often installed on outer surfaces of fiberglass. It may happen that wooden tops on which the product can be applied via the easy fix system are missing, or by simply placing it on the bottom.
- ✓ When the basic surface on which the product leans is not regular, you can align the flange and compensate the rear misalignment by means of these adjustable rear feet, having a setting range from -18 to +20 mm
- ✓ With this product you will be able to ensure your refrigerator a secure base in any support surface condition.





Drawer 30 with adjustable rear feet



Drawer 30 with adjustable rear feet



Drawer 30



Part Numbers, Description, Prices and Availability

Part Number	Description
D030DSAAS12111AA	Drawer 30 DC 12-24V Silver door
D030DBAAB12111AA	Drawer 30 DC 12-24V Black door
D030DWAAW12111AA	Drawer 30 DC 12-24V White door
D030DSAAS12111AE	Drawer 30 DC 12-24V Silver door with adjustable rear feet
D030DBAAB12111AE	Drawer 30 DC 12-24V Black door with adjustable rear feet
D030DWAAW12111AE	Drawer 30 DC 12-24V White door with adjustable rear feet
SGB00215AA	Frame 4 side Aisi 304 inox silver painted
SGB00218AA	Frame 4 side black steel painted
SGB00221AA	Frame 4 side Aisi 304 inox white painted
SBE00231AA	Adjustable feet kit 2 pcs. for DR30

